

Adjustable **WEAVER/PICATINNY TACTICAL SIGHT SETS** for most famous brand semi-automatic and pump shotguns such as Beretta, Benelli, Mossberg, Browning, Winchester, Ithaca, etc...with barrel diameters ranging from .819" to .842" (20,80 mm to 21,40 mm) for standard shotguns and .858" to .882" (21,80 mm to 22,40 mm) for heavier gauges.

SG6 locking ring, height adj., from 25 to 29 mm.		
	LPA code	Components
<input type="checkbox"/>	SHT01W	BAR11W+D4+SG6+M1B
<input type="checkbox"/>	SHT02W	BAR11W+D2+SG6+M1B
<input type="checkbox"/>	SHT03W	BAR11W+D5+SG6+M1F
<input type="checkbox"/>	SHT04W	BAR11W+D3+SG6+M1T
<input type="checkbox"/>	SHT05W	BAR11W+D7+SG6+M1B

SG4 to be welded, height adj., from 25 to 29 mm.		
	LPA code	Components
<input type="checkbox"/>	SHS01W	BAR11W+D4+SG4+M1B
<input type="checkbox"/>	SHS02W	BAR11W+D2+SG4+M1B
<input type="checkbox"/>	SHS03W	BAR11W+D5+SG4+M1F
<input type="checkbox"/>	SHS04W	BAR11W+D3+SG4+M1T
<input type="checkbox"/>	SHS05W	BAR11W+D7+SG4+M1B

Interchangeable front sights for SG6***

***M1B white



***M1F red fiber optic



***M1T tritium



BAR11W height adj. from 11,5 to 16,5 mm over weaver/picatinny rail

BAR11W**

SG6**

SG4**

Interchangeable ghost rings for BAR11W**

**D2 twin dot



**D3 tritium



**D4 ghost ring



**D5 green fiber optic



**D7 2 mm hole ghost ring



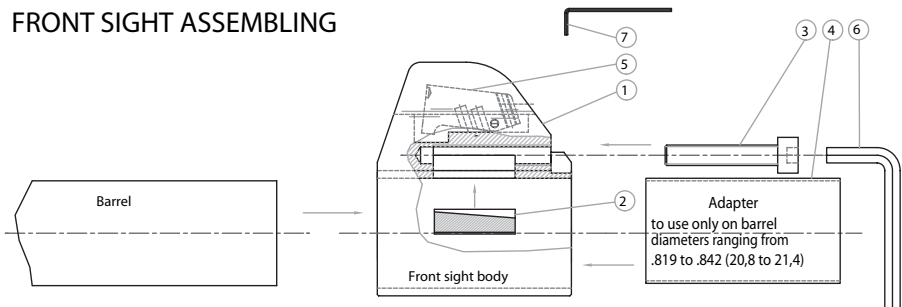
Attention: when considering a purchase be sure that the barrel diameter of your shotgun corresponds to the above mentioned dimensions. You also need a minimum space of 1,480" (37,60 mm) in the front of the barrel in order to fit the front sight. This requirement pertains to extended magazine tubes for law enforcement where a support bracket would restrict the proper fitting of the front sight. In this case our silver soldered front sight would be recommended.

SG4 WELDED FRONT SIGHT

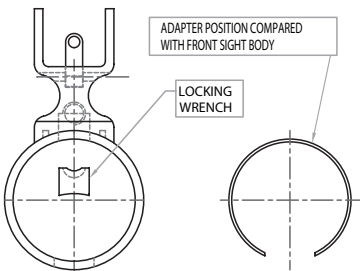


SG6 LOCKING RING FRONT SIGHTS

FRONT SIGHT ASSEMBLING



FRONTAL VIEW



FRONT SIGHT COMPONENTS:

1. FRONT SIGHT BODY
2. LOCKING INSERT
3. LOCKING SCREW
4. RING ADAPTER (To use only on barrel diameters ranging from .819" to .842" / 20,8 to 21,4)
5. FRONT SIGHT
6. ALLEN WRENCH FOR FRONT SIGHT LOCKING
7. ALLEN WRENCH FOR FRONT SIGHT HEIGHT ADJUSTMENT

during installation install front sight upside down.

Align the front sight securing it by tightening the locking screw with the supplied allen wrench (#6). Adjust the height of the front sight by means of the provided allen wrench (#7).

ØBARREL		ØBARREL
Ø .842 (21,4)	.669 (17)	Ø .882 (22,4)
Ø .838 (21,3)	.709 (18)	Ø .878 (22,3)
Ø .835 (21,2)	.748 (19)	Ø .874 (22,2)
Ø .831 (21,1)	.787 (20)	Ø .870 (22,1)
Ø .827 (21,0)	.827 (21)	Ø .866 (22,0)
Ø .823 (20,9)	.866 (22)	Ø .862 (21,9)
Ø .819 (20,8)	.905 (23)	Ø .858 (21,8)

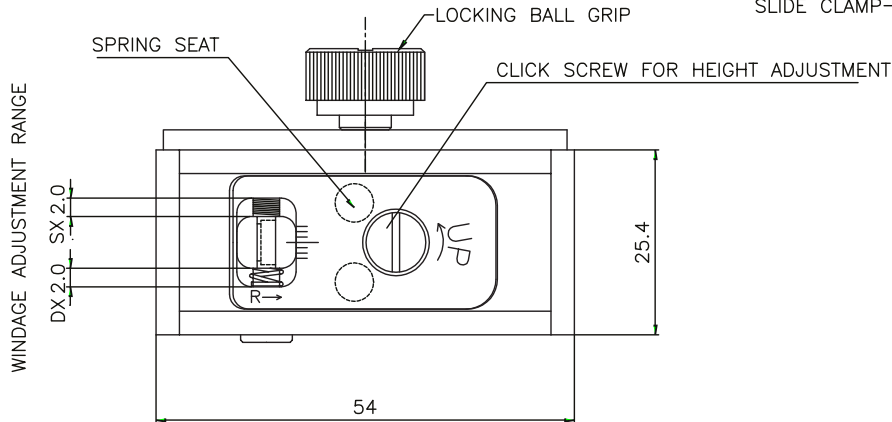
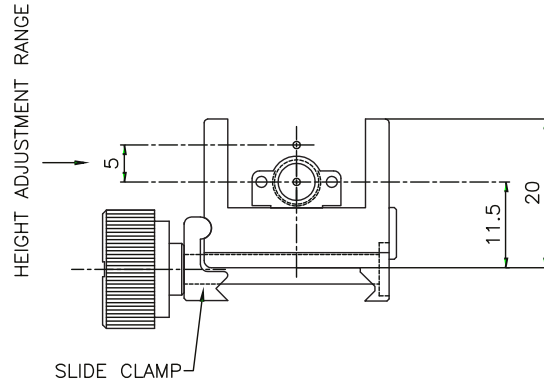
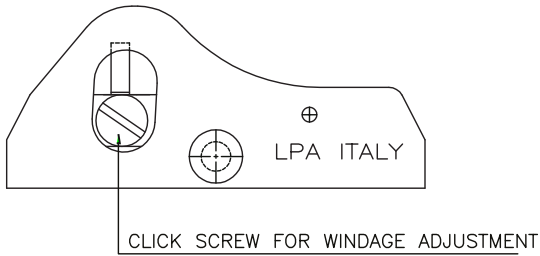
FRONT SIGHT ASSEMBLING INSTRUCTIONS:

Before fitting the front sight onto the barrel cut the locking screw (#3) to the proper length indicated in the chart below as determined by the barrel diameter. Insert the front sight body (#1) with the locking insert (#2) onto the barrel as shown in the sketch (note locking insert has slight taper - install with lower end facing forward). To prevent the locking insert from falling out



SHOTGUN REAR SIGHT

Rear sight with base and suitable for quick fixing on weaver or/and picatinny (Height 8 mm.lowest as possible).



L.P.A. di Ghilardi S.R.L.

Sede legale: 25063 GARDONE V.T.(BS) - Via A.Canossi, 1 - ITALY

Sede operativa: 25068 SAREZZO (BS) - Via Seradello, 253 - ITALY

info@lpasights.com

Tel. 030-8911481 Fax 030-8910951

