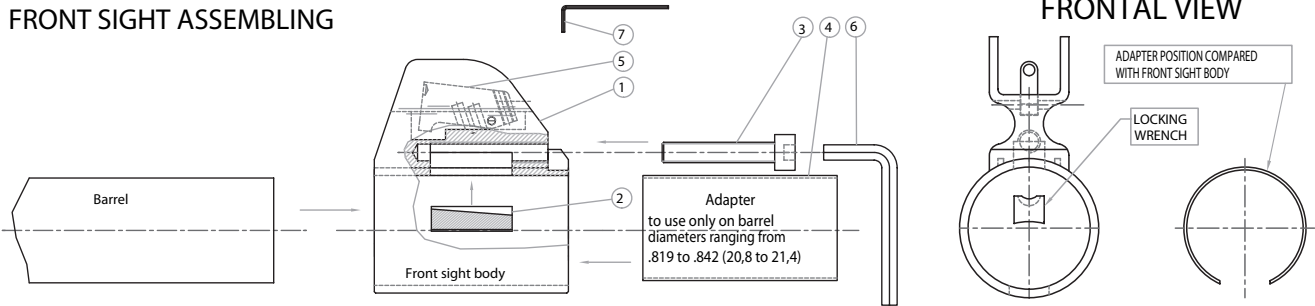




SG2 WELDED FRONT SIGHT

SG3 LOCKING RING FRONT SIGHTS

FRONT SIGHT ASSEMBLING



FRONT SIGHT COMPONENTS:

1. FRONT SIGHT BODY
2. LOCKING INSERT
3. LOCKING SCREW
4. RING ADAPTER (To use only on barrel diameters ranging from .819" to .842" / 20,8 to 21,4)
5. FRONT SIGHT
6. ALLEN WRENCH FOR FRONT SIGHT LOCKING
7. ALLEN WRENCH FOR FRONT SIGHT HEIGHT ADJUSTMENT

FRONT SIGHT ASSEMBLING INSTRUCTIONS:

Before fitting the front sight onto the barrel cut the locking screw (#3) to the proper length indicated in the chart below as determined by the barrel diameter. Insert the front sight body (#1) with the locking insert (#2) onto the barrel as shown in the

sketch (note locking insert has slight taper - install with lower end facing forward).

To prevent the locking insert from falling out during installation install front sight upside down.

Align the front sight securing it by tightening the locking screw with the supplied allen wrench (#6).

Adjust the height of the front sight by means of the provided allen wrench (#7).

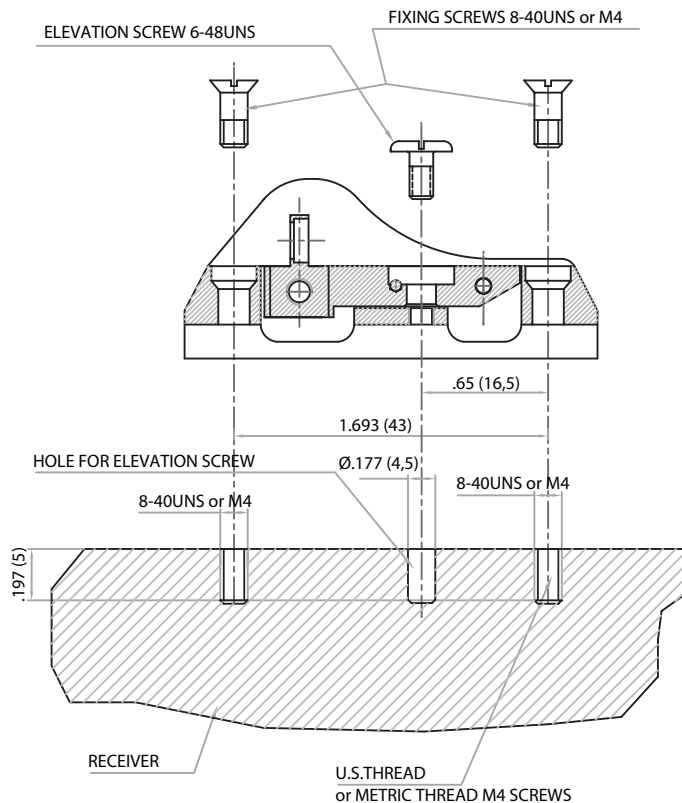
ØBARREL		ØBARREL
Ø .842 (21,4)	.669 (17)	Ø .882 (22,4)
Ø .838 (21,3)	.709 (18)	Ø .878 (22,3)
Ø .835 (21,2)	.748 (19)	Ø .874 (22,2)
Ø .831 (21,1)	.787 (20)	Ø .870 (22,1)
Ø .827 (21,0)	.827 (21)	Ø .866 (22,0)
Ø .823 (20,9)	.866 (22)	Ø .862 (21,9)
Ø .819 (20,8)	.905 (23)	Ø .858 (21,8)



SG7 FRONT SIGHT FITTED ON RIB FROM 6 TO 9 mm WIDE, LOCKING BY SCREWS ON EITHER SIDES



REAR SIGHT ASSEMBLING



REAR SIGHT ASSEMBLING INSTRUCTIONS:

Before drilling and tapping the receiver of your gun place the sight where its concave base is in tight contact with the convex top of the receiver.

Score the center to center distance of the two locking screw holes.

Remove rear sight and measure position of elevation screw relief hole.

Drill all three holes according to illustration depth tapping the two outer locking screw holes only according to the "rear sight assembling" illustration (8-40 UNS VA56 screws mounted in the rear sight base/M4 VI53 screws in the package).

TECHNICAL SUGGESTIONS:

During installation of front and rear sights a drop of Loctite® Blue placed on the threads of each locking screw will help in preventing the locking screws from backing out during use.